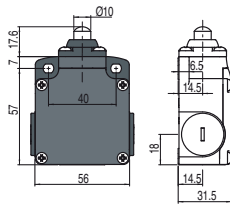
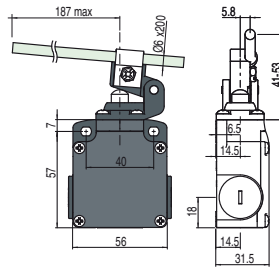
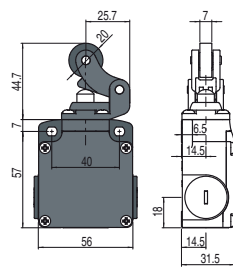


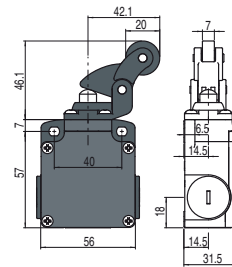
- Contact type:
- R** = snap action
  - L** = slow action
  - LO** = slow action overlapped
  - LS** = slow action shifted
  - LV** = slow action shifted and spaced
  - LI** = slow action independent
  - LA** = slow action closer
  - ⏏** = electronic PNP



With stainless steel roller on request

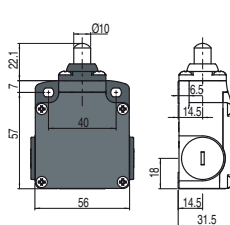


With stainless steel roller on request

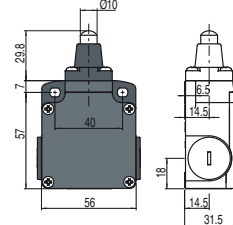
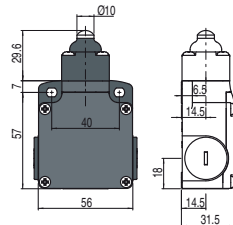


Contact blocks

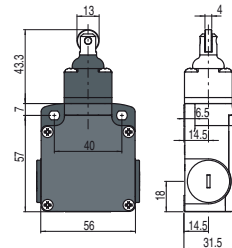
5	<b>R</b>	<b>FL 501-M2</b>	➔ 1NO+1NC	<b>FL 502-M2</b>	➔ 1NO+1NC	<b>FL 504-M2</b>	1NO+1NC	<b>FL 505-M2</b>	➔ 1NO+1NC
6	<b>L</b>	<b>FL 601-M2</b>	➔ 1NO+1NC	<b>FL 602-M2</b>	➔ 1NO+1NC	<b>FL 604-M2</b>	1NO+1NC	<b>FL 605-M2</b>	➔ 1NO+1NC
7	<b>LO</b>	<b>FL 701-M2</b>	➔ 1NO+1NC	<b>FL 702-M2</b>	➔ 1NO+1NC	<b>FL 704-M2</b>	1NO+1NC	<b>FL 705-M2</b>	➔ 1NO+1NC
9	<b>L</b>	<b>FL 901-M2</b>	➔ 2NC	<b>FL 902-M2</b>	➔ 2NC	<b>FL 904-M2</b>	2NC	<b>FL 905-M2</b>	➔ 2NC
10	<b>L</b>	<b>FL 1001-M2</b>	2NO	<b>FL 1002-M2</b>	2NO	<b>FL 1004-M2</b>	2NO	<b>FL 1005-M2</b>	2NO
11	<b>R</b>	<b>FL 1101-M2</b>	➔ 2NC	<b>FL 1102-M2</b>	➔ 2NC	<b>FL 1104-M2</b>	2NC	<b>FL 1105-M2</b>	➔ 2NC
12	<b>R</b>	<b>FL 1201-M2</b>	2NO	<b>FL 1202-M2</b>	2NO	<b>FL 1204-M2</b>	2NO	<b>FL 1205-M2</b>	2NO
13	<b>LV</b>	<b>FL 1301-M2</b>	➔ 2NC	<b>FL 1302-M2</b>	➔ 2NC	<b>FL 1304-M2</b>	2NC	<b>FL 1305-M2</b>	➔ 2NC
14	<b>LS</b>	<b>FL 1401-M2</b>	➔ 2NC	<b>FL 1402-M2</b>	➔ 2NC	<b>FL 1404-M2</b>	2NC	<b>FL 1405-M2</b>	➔ 2NC
15	<b>LS</b>	<b>FL 1501-M2</b>	2NO	<b>FL 1502-M2</b>	2NO	<b>FL 1504-M2</b>	2NO	<b>FL 1505-M2</b>	2NO
18	<b>LA</b>	<b>FL 1801-M2</b>	➔ 1NO+1NC	<b>FL 1802-M2</b>	➔ 1NO+1NC	<b>FL 1804-M2</b>	1NO+1NC	<b>FL 1805-M2</b>	➔ 1NO+1NC
20	<b>L</b>	<b>FL 2001-M2</b>	➔ 1NO+2NC	<b>FL 2002-M2</b>	➔ 1NO+2NC	<b>FL 2004-M2</b>	1NO+2NC	<b>FL 2005-M2</b>	➔ 1NO+2NC
21	<b>L</b>	<b>FL 2101-M2</b>	➔ 3NC	<b>FL 2102-M2</b>	➔ 3NC	<b>FL 2104-M2</b>	3NC	<b>FL 2105-M2</b>	➔ 3NC
22	<b>L</b>	<b>FL 2201-M2</b>	➔ 2NO+1NC	<b>FL 2202-M2</b>	➔ 2NO+1NC	<b>FL 2204-M2</b>	2NO+1NC	<b>FL 2205-M2</b>	➔ 2NO+1NC
2	<b>R</b>	<b>FL 201-M2</b>	2x(1NO-1NC)	<b>FL 202-M2</b>	2x(1NO-1NC)	<b>FL 204-M2</b>	2x(1NO-1NC)	<b>FL 205-M2</b>	2x(1NO-1NC)
E1	<b>⏏</b>	<b>FL E101-M2</b>	1NO-1NC	<b>FL E102-M2</b>	1NO-1NC	<b>FL E104-M2</b>	1NO-1NC	<b>FL E105-M2</b>	1NO-1NC
Max. speed		page 237 - type 4		page 237 - type 3		0.5 m/s		page 237 - type 3	
Min. force		8 N (25 N ➔)		6 N (25 N ➔)		0.17 Nm		6 N (25 N ➔)	
Travel diagrams		page 238 - group 1		page 238 - group 2		page 238 - group 1		page 238 - group 2	



With external rubber gasket



With external rubber gasket



Contact blocks

5	<b>R</b>	<b>FL 508-M2</b>	➔ 1NO+1NC	<b>FL 510-M2</b>	➔ 1NO+1NC	<b>FL 511-M2</b>	➔ 1NO+1NC	<b>FL 515-M2</b>	➔ 1NO+1NC
6	<b>L</b>	<b>FL 608-M2</b>	➔ 1NO+1NC	<b>FL 610-M2</b>	➔ 1NO+1NC	<b>FL 611-M2</b>	➔ 1NO+1NC	<b>FL 615-M2</b>	➔ 1NO+1NC
7	<b>LO</b>	<b>FL 708-M2</b>	➔ 1NO+1NC	<b>FL 710-M2</b>	➔ 1NO+1NC	<b>FL 711-M2</b>	➔ 1NO+1NC	<b>FL 715-M2</b>	➔ 1NO+1NC
9	<b>L</b>	<b>FL 908-M2</b>	➔ 2NC	<b>FL 910-M2</b>	➔ 2NC	<b>FL 911-M2</b>	➔ 2NC	<b>FL 915-M2</b>	➔ 2NC
10	<b>L</b>	<b>FL 1008-M2</b>	2NO	<b>FL 1010-M2</b>	2NO	<b>FL 1011-M2</b>	2NO	<b>FL 1015-M2</b>	2NO
11	<b>R</b>	<b>FL 1108-M2</b>	➔ 2NC	<b>FL 1110-M2</b>	➔ 2NC	<b>FL 1111-M2</b>	➔ 2NC	<b>FL 1115-M2</b>	➔ 2NC
12	<b>R</b>	<b>FL 1208-M2</b>	2NO	<b>FL 1210-M2</b>	2NO	<b>FL 1211-M2</b>	2NO	<b>FL 1215-M2</b>	2NO
13	<b>LV</b>	<b>FL 1308-M2</b>	➔ 2NC	<b>FL 1310-M2</b>	➔ 2NC	<b>FL 1311-M2</b>	➔ 2NC	<b>FL 1315-M2</b>	➔ 2NC
14	<b>LS</b>	<b>FL 1408-M2</b>	➔ 2NC	<b>FL 1410-M2</b>	➔ 2NC	<b>FL 1411-M2</b>	➔ 2NC	<b>FL 1415-M2</b>	➔ 2NC
15	<b>LS</b>	<b>FL 1508-M2</b>	2NO	<b>FL 1510-M2</b>	2NO	<b>FL 1511-M2</b>	2NO	<b>FL 1515-M2</b>	2NO
18	<b>LA</b>	<b>FL 1808-M2</b>	➔ 1NO+1NC	<b>FL 1810-M2</b>	➔ 1NO+1NC	<b>FL 1811-M2</b>	➔ 1NO+1NC	<b>FL 1815-M2</b>	➔ 1NO+1NC
20	<b>L</b>	<b>FL 2008-M2</b>	➔ 1NO+2NC	<b>FL 2010-M2</b>	➔ 1NO+2NC	<b>FL 2011-M2</b>	➔ 1NO+2NC	<b>FL 2015-M2</b>	➔ 1NO+2NC
21	<b>L</b>	<b>FL 2108-M2</b>	➔ 3NC	<b>FL 2110-M2</b>	➔ 3NC	<b>FL 2111-M2</b>	➔ 3NC	<b>FL 2115-M2</b>	➔ 3NC
22	<b>L</b>	<b>FL 2208-M2</b>	➔ 2NO+1NC	<b>FL 2210-M2</b>	➔ 2NO+1NC	<b>FL 2211-M2</b>	➔ 2NO+1NC	<b>FL 2215-M2</b>	➔ 2NO+1NC
2	<b>R</b>	<b>FL 208-M2</b>	2x(1NO-1NC)	<b>FL 210-M2</b>	2x(1NO-1NC)	<b>FL 211-M2</b>	2x(1NO-1NC)	<b>FL 215-M2</b>	2x(1NO-1NC)
E1	<b>⏏</b>	<b>FL E108-M2</b>	1NO-1NC	<b>FL E110-M2</b>	1NO-1NC	<b>FL E111-M2</b>	1NO-1NC	<b>FL E115-M2</b>	1NO-1NC
Max. speed		page 237 - type 4		page 237 - type 4		page 237 - type 4		page 237 - type 2	
Min. force		8 N (25 N ➔)		11 N (25 N ➔)		8 N (25 N ➔)		11 N (25 N ➔)	
Travel diagrams		page 238 - group 1		page 238 - group 1		page 238 - group 1		page 238 - group 1	

All measures in the drawings are in mm

Items with code on green background are stock items

Accessories See page 225